

## CUBIC



Poltrona. Basamento in tondino d'acciaio cromato.  
Armchair. Chromed steel rod frame.

Dimensioni		Dimensions	
Altezza totale (cm)	71	Total height (inches)	28"
Altezza sedile (cm)	46	Seat height (inches)	18 <sup>3</sup> / <sub>16</sub>
Larghezza totale (cm)	71	Total width (inches)	28"
Profondità totale (cm)	66	Total depth (inches)	26"
Peso (kg)	24	Weight max. (kg)	24
Volume (m <sup>3</sup> )	0,35	Volume (m <sup>3</sup> )	0,35
Tessuto (mtl)	2,30	Fabric (yards)	2,55
Pelle (m <sup>2</sup> )	4,30	Leather (sq. feet)	46,3

### Code

ZYCUBICCU3H1BA	Rivestimento in cat. A - Cover in cat. A
ZYCUBICCU3H1BB	Rivestimento in cat. B - Cover in cat. B
ZYCUBICCU3H1BD	Rivestimento in cat. D - Cover in cat. D

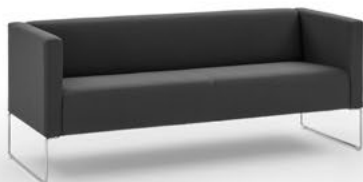


Divano 2 posti. Basamento in tondino d'acciaio cromato.  
2 seater sofa. Chromed steel rod frame.

Dimensioni		Dimensions	
Altezza totale (cm)	71	Total height (inches)	28"
Altezza sedile (cm)	46	Seat height (inches)	18 <sup>3</sup> / <sub>16</sub>
Larghezza totale (cm)	124	Total width (inches)	48 <sup>3</sup> / <sub>16</sub>
Profondità totale (cm)	66	Total depth (inches)	26"
Peso (kg)	30	Weight max. (kg)	30
Volume (m <sup>3</sup> )	0,60	Volume (m <sup>3</sup> )	0,60
Tessuto (mtl)	3,30	Fabric (yards)	3,65
Pelle (m <sup>2</sup> )	6,00	Leather (sq. feet)	64,6

### Code

ZYCUBICCU3H2BA	Rivestimento in cat. A - Cover in cat. A
ZYCUBICCU3H2BB	Rivestimento in cat. B - Cover in cat. B
ZYCUBICCU3H2BD	Rivestimento in cat. D - Cover in cat. D



Divano 3 posti. Basamento in tondino d'acciaio cromato.  
3-seater sofa. Chromed steel rod frame.

Dimensioni		Dimensions	
Altezza totale (cm)	71	Total height (inches)	28"
Altezza sedile (cm)	46	Seat height (inches)	18 <sup>3</sup> / <sub>16</sub>
Larghezza totale (cm)	176	Total width (inches)	69 <sup>3</sup> / <sub>16</sub>
Profondità totale (cm)	66	Total depth (inches)	26"
Peso (kg)	36	Weight max. (kg)	36
Volume (m <sup>3</sup> )	0,90	Volume (m <sup>3</sup> )	0,90
Tessuto (mtl)	4,30	Fabric (yards)	4,75
Pelle (m <sup>2</sup> )	7,00	Leather (sq. feet)	75,3

### Code

ZYCUBICCU3H3BA	Rivestimento in cat. A - Cover in cat. A
ZYCUBICCU3H3BB	Rivestimento in cat. B - Cover in cat. B
ZYCUBICCU3H3BD	Rivestimento in cat. D - Cover in cat. D



Panca. Basamento in tondino d'acciaio cromato.  
Bench. Chromed steel rod frame.

Dimensioni		Dimensions	
Altezza totale (cm)	46	Total height (inches)	18 <sup>3</sup> / <sub>16</sub>
Larghezza totale (cm)	110	Total width (inches)	69 <sup>3</sup> / <sub>16</sub>
Profondità totale (cm)	66	Total depth (inches)	26"
Peso (kg)	15	Weight max. (kg)	15
Volume (m <sup>3</sup> )	0,40	Volume (m <sup>3</sup> )	0,40
Tessuto (mtl)	1,80	Fabric (yards)	2,00
Pelle (m <sup>2</sup> )	3,50	Leather (sq. feet)	37,7

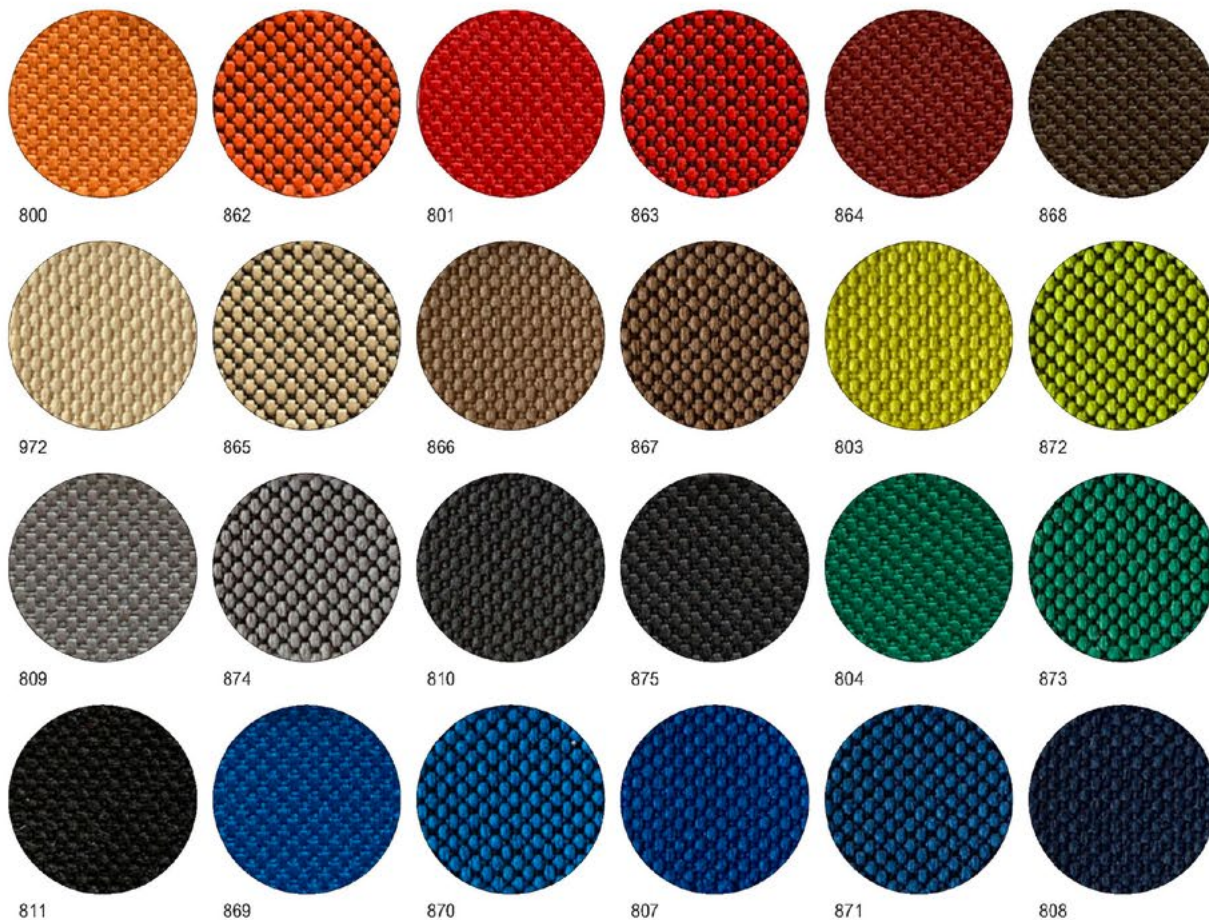
### Code

ZYCUBICCU3HCPA	Rivestimento in cat. A - Cover in cat. A
ZYCUBICCU3HCPB	Rivestimento in cat. B - Cover in cat. B
ZYCUBICCU3HCPD	Rivestimento in cat. D - Cover in cat. D

## Finiture disponibili per le sedute - Available finishes for seatings

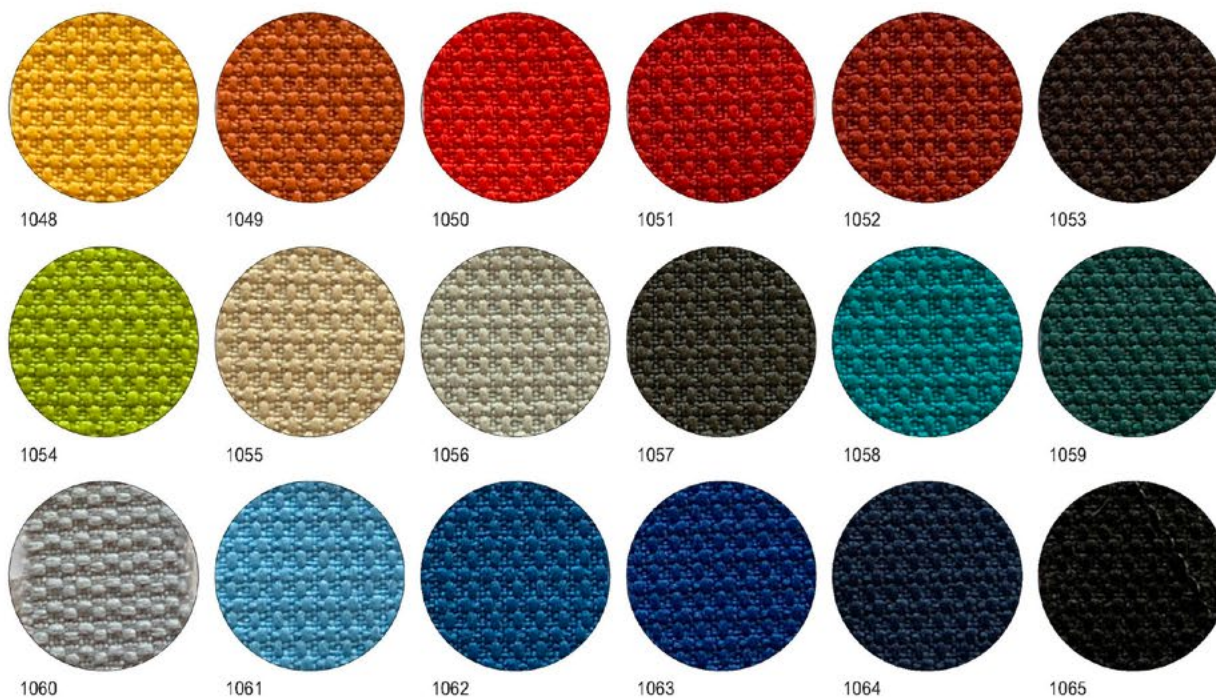
### GELSOMINO - Cat. A

Tessuto ignifugo autoestinguente Classe 11M - 100% Poliestere - Peso 400 gr/mq - 80.000 Martindale  
Fire retardant fabric italian test Classe 11M - 100% Polyester - Weight 400 gr/mq - 80.000 Martindale



### ROSE - Cat. B

Tessuto ignifugo autoestinguente Classe 11M - 100% Poliestere riciclato - Peso 290 gr/mq - 100.000 Martindale  
Fire retardant fabric italian test Classe 11M - 100% Recycled polyester - Weight 290 gr/mq - 100.000 Martindale



## Finiture disponibili per le sedute - Available finishes for seatings

### FIORDALISO - Cat. B

Ecopelle ignifuga autoestinguente Classe 11M - 90% PVC plastificato, 10% Poliammide - Peso 700 gr/mq - 80.000 Martindale

Fire retardant eco-leather italian test Classe 11M - 90% PVC plastic-coated, 10% Polyamid - Weight 700 gr/mq - 80.000 Martindale



### ORTENSIA - Cat. D

Tessuto ignifugo autoestinguente Classe 11M - 70% Lana, 30% Lino - Peso 440 gr/mq - 100.000 Martindale

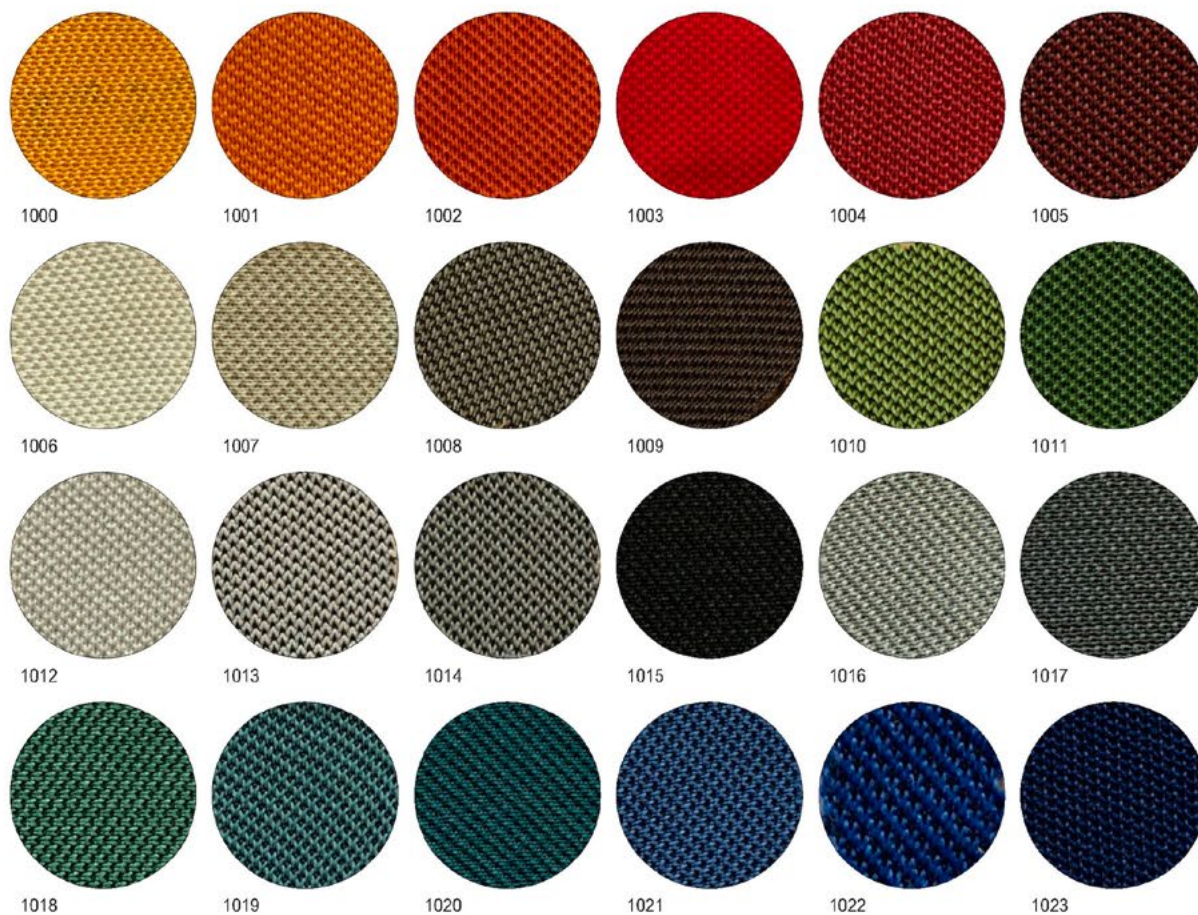
Fire retardant fabric italian test Classe 11M - 70% Wool, 30% Linen - Weight 440 gr/mq - 100.000 Martindale



## Finiture disponibili per le sedute - Available finishes for seatings

### TULIPANO - Cat. B

Tessuto ignifugo autoestinguente Classe 11M - 100% Poliestere riciclato - Peso 350 gr/mq - 100.000 Martindale  
Fire retardant fabric italian test Classe 11M - 100% Recycled polyester - Weight 350 gr/mq - 100.000 Martindale



### NARCISO - Cat. D

Tessuto ignifugo autoestinguente Classe 11M - 100% Lana - Peso 550 gr/mq - 60.000 Martindale  
Fire retardant fabric italian test Classe 11M - 100% Wool - Weight 550 gr/mq - 60.000 Martindale



## Finiture disponibili per le sedute - Available finishes for seatings

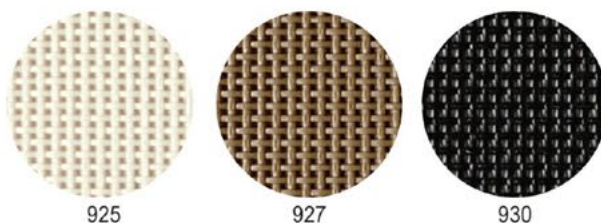
### IRIS - Cat. D

Tessuto ignifugo autoestinguente Classe 11M - 100% Poliolefinica - Peso 505 gr/mq - 50.000 Martindale  
 Fire retardant fabric italian test Classe 11M - 100% Polyolefin - Weight 505 gr/mq - 50.000 Martindale



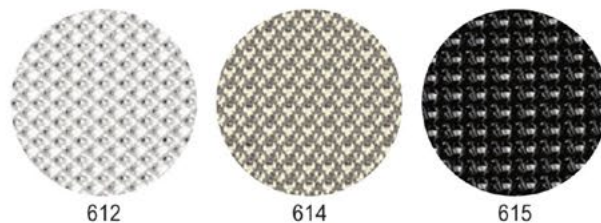
### GERANIO

Rete ignifuga autoestinguente Classe 11M - 77% Polivinile,  
 23% Poliestere - Peso 560 gr/mq  
 Fire retardant mesh italian test Classe 11M - 77% Polyvinyl,  
 23% Polyester - Weight 560 gr/mq



### MUGHETTO

Rete ignifuga autoestinguente Classe 11M - 100% Poliestere  
 - Peso 540 gr/mq  
 Fire retardant mesh italian test Classe 11M - 100% Polyester  
 - Weight 540 gr/mq



### GENZIANA

Rete ignifuga autoestinguente Classe 11M - 100% Poliestere  
 - Peso 400 gr/mq  
 Fire retardant mesh italian test Classe 11M - 100% Polyester  
 - Weight 400 gr/mq

